



Cal/OSHA, DOT HAZMAT, EEOC, EPA, HAZWOPER, HIPAA, IATA, IMDG, TDG, MSHA, OSHA, and Canada OHS Regulations and Safety Online Training

Since 2008

This document is provided as a training aid
and may not reflect current laws and regulations.

Be sure and consult with the appropriate governing agencies
or publication providers listed in the "Resources" section of our website.

www.ComplianceTrainingOnline.com



[Facebook](#)



[LinkedIn](#)



[Twitter](#)



[Website](#)



CONSOL ENERGY

Mine Emergency Preparedness and Response

CONSOL Energy

- The most important Emergency Response Tool that any location has, is the personnel.
- Training of these personnel, must be one of your highest priorities. Accounting for all personnel is every ones number one priority.
- MERD Exercises are an excellent tool to train personnel on Incident Response and Notification.
- Fire Drills must be conducted properly to insure everyone understands their duties and roles. Extinguishing a fire in the incipient stages is critical, as the fire doubles every 5 minutes.
- Evacuation Drills, also must be conducted properly to insure that every person is accounted for and safe.
- Proper Check In/Check Out & tracking becomes a critical issue following a mine emergency.

CONSOL Energy

- Hands-On Fire Fighting Training demonstrates to each employee how effective they can be in direct fire fighting.
- Support groups such as Fire Brigades and Mine Rescue Teams are another important link in the incident response to control and eliminate a situation. It's important to know who the Fire Brigade & Mine Rescue Personnel are on your shift and where they are located. They can provide you with expertise in critical situations.
- Communication is the link to the situation underground and the surface. Find out the nature of the emergency or incident: What has occurred?
- (a) Ignition (b) explosion (c) fire (d) roof fall entrapment
- Dynamic incidents such as fires, explosions or entrapments can develop into uncontrolled events. It is very important to STAY CALM, speak clearly, and give or ask for as much information as possible.





105



107

OutStation Overview

	Enabled	OutStation Location	OutStation Status	Trunk 1 Sensor Status	Trunk 2 Sensor Status
OutStation 1	Yes	2 Belt Starter OutStation	Clear	Clear	Clear
OutStation 2	Yes	5 Belt Starter OutStation	Clear	Clear	Clear
OutStation 3	Yes	7 Belt Starter OutStation	Clear	Clear	Clear
OutStation 4	Yes	11 Belt Starter OutStation	Clear	Clear	
OutStation 5	Yes	9D OutStation	Clear	Clear	Clear
OutStation 6	Yes	14D Outstation	Clear	Clear	Clear
OutStation 7	Yes	16D OutStation	Clear	Clear	Clear
OutStation 8	No				
OutStation 9	Yes	13D OutStation	Clear	Clear	Clear
OutStation 10	Yes	15D OutStation	Clear	Clear	Clear
OutStation 11	Yes	13 Mother Belt	Clear	Clear	Clear
OutStation 12	No				
OutStation 13	No				
OutStation 14	Yes	OutStation 14	Clear	Clear	Clear
OutStation 15	No				

Alarm Date	Alarm Time	Alarm Description
5/6/2010	9:05:44 AM	(13 Belt OutStation) 12 MB Transfer CO Sensor Communications Failure
5/6/2010	9:05:20 AM	(13 Belt OutStation) 12 MB Transfer CO Sensor Communications Failure
5/6/2010	9:05:01 AM	(13 Belt OutStation) 12 MB Transfer CO Sensor Communications Failure

Flashing = Valid Realtime Data

CLIENT ACTIVITY

NON-Flashing = Invalid Data

ALARMS

Legend

Login

Sensors

Main #1

Exit

LOVERIDGE

HP L2045w

106



HP L2045w

108

106

MCELROY COAL COMPANY, MOUNDSVILLE, WEST VIRGINIA

05/06/10 08:53:13

Data age 00:00

Belt	Type	State
Belt1	Mains	ON
Belt2	Mains	ON
Belt3	Mains	ON
Belt5	Mains	ON
Belt7	Mains	ON
Belt9	Mains	ON
Belt10	Mains	ON
Belt12	Mains	ON
Belt13	Mains	ON
Belt14	Mains	ON
Belt15	Mains	ON
Bunker	Mains	ON
Belt16	Mains	ON
Belt17	Mains	ON
Belt5North1	Mains	ON
Belt5North2	Mains	ON
Belt5North3	Mains	#N/A

A Side LW Amps	#COM
B Side LW Amps	137

Belt	Type	State
5North4B	LW	ON
5North7A	LW	OFF
5North5B	CM	ON
5North6B	CM	#COM
5North8A	CM	ON
5North9A	CM	OFF

Bunker %	69
Bunker Reclaim	3,510

Belt	Type	State
Slope Conv	ROM	ON
Silo Feed	ROM	ON
Silo 1 Reclaim	ROM	ON
Silo 2 Reclaim	ROM	ON

Head Rip Status	OK
Tail Rip Status	OK

Raw Tons Prev. Daily Total	55,460
Raw Tons Monthly Total	176,980

Raw Tons Midnight Shift	15,100
Raw Tons Day Shift	970
Raw Tons Afternoon Shift	18,010
Raw Tons Daily Total	16,070

Raw Coal(U13) Belt TPH	3,251
------------------------	-------

Flop gate	Silo 2	Silo 1 %	73	Silo 2 %	3
-----------	--------	----------	----	----------	---

Rockdust level	68
----------------	----

[Belts >>](#) [Analyzers >>](#)

Last refresh: Thu May 06 08:53:13 2010

Local intranet

100%

MCELROY BELTS

HP L2045w

MINE EMERGENCY RESPONSE



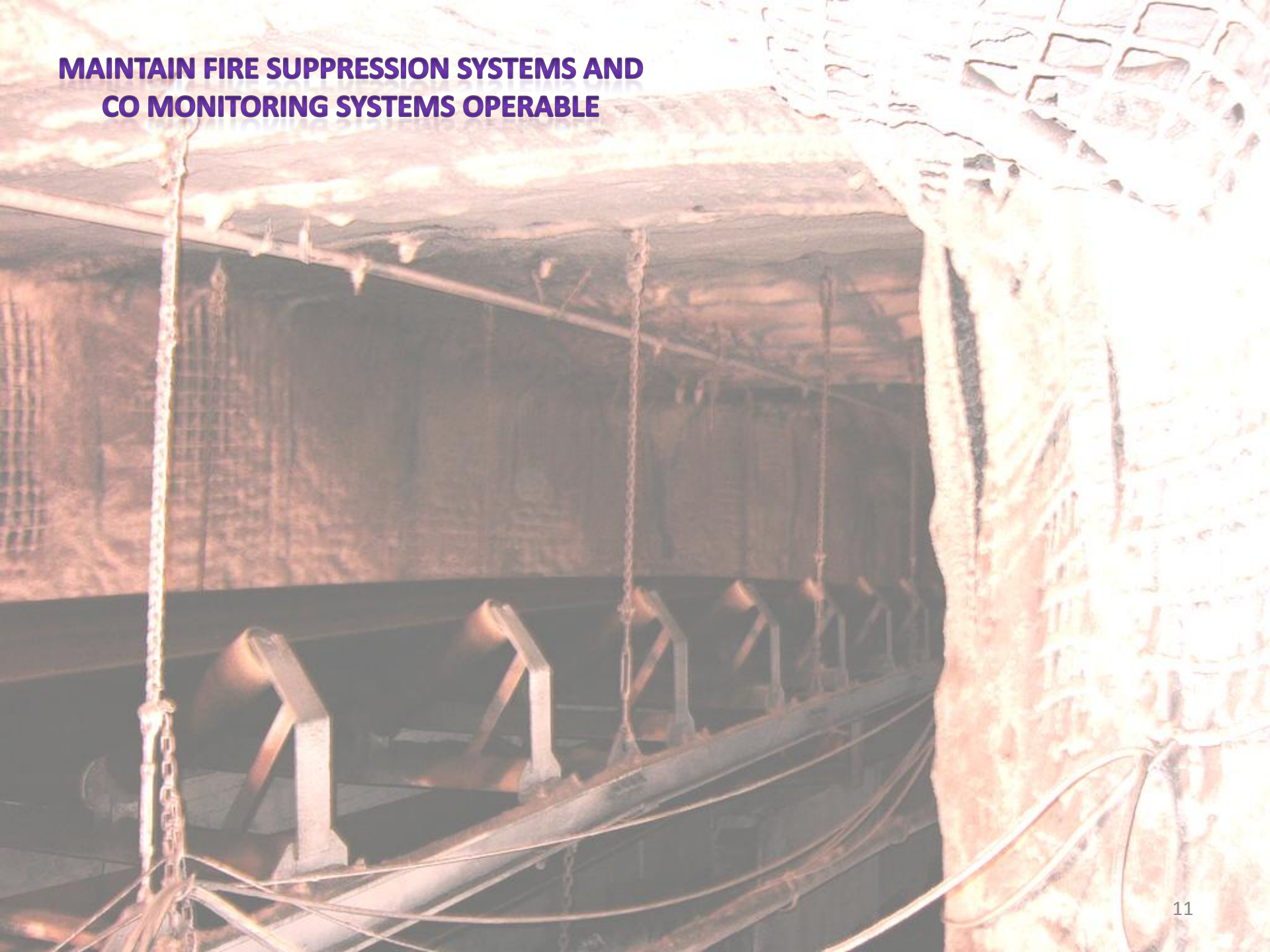
FIRE FIGHTING EQUIPMENT





FIRST RESPONDER HOSE

**MAINTAIN FIRE SUPPRESSION SYSTEMS AND
CO MONITORING SYSTEMS OPERABLE**



A photograph of an emergency materials storage area. In the foreground, a large red industrial machine with two red gas cylinders is connected to a blue and silver Sullair 1150XH air compressor via thick black hoses. The equipment is situated on a gravel surface. In the background, there are blue storage containers and a forested hillside under a clear blue sky. The text "EMERGENCY MATERIALS STORAGE AREAS" is overlaid in large red letters with a white outline.

EMERGENCY MATERIALS STORAGE AREAS

HAVE A LIST OF CONTRACTORS ON HAND ,
HOW MUCH EQUIPMENT CAN THEY PROVIDE AND
HOW DO YOU GET IN TOUCH IN THE MIDDLE OF THE NIGHT.

Know the contact numbers for
Drilling Companies



Maintain a list of Providers of
Nitrogen, CO2, Foam





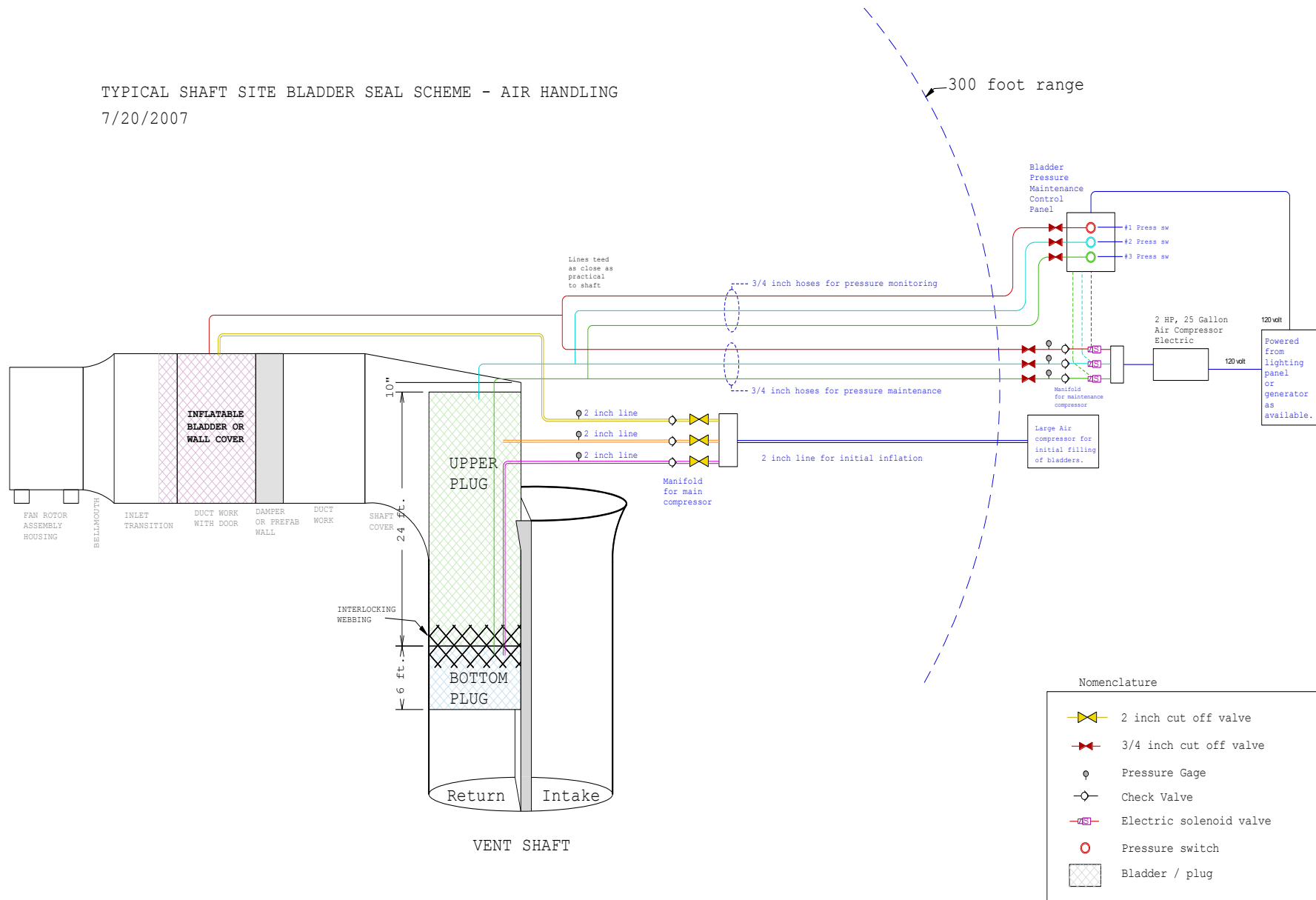


Rescue Teams Are Assembled



TYPICAL SHAFT SITE BLADDER SEAL SCHEME - AIR HANDLING

7/20/2007



NO TRESPASSING
OPEN PIT
NO SMOKING 





WARNING:

SHAFT & BLADES



"Quality Environmental Solutions"

Interstate Products, Inc.

800-474-7294

Outside The U.S.

1-941-377-8610

www.interstateproducts.com

PROPER USE OF PRODUCTS ARE THE SOLE RESPONSIBILITY OF END USER.
Please refer to the chemical compatibility chart.

Storage Containers 8' X 20'
For shaft sealing materials

R
38 5

PAGE SER.
SHAFT

STORAGE TO GO
Residential
"Storage & Moving Solutions
for Home or Business"
1-800-283-5662



Inside Storage Container



Sheet Metal Racks









**Bladder weight is
2,600 lbs.**

**Estimated cost
\$27,000.00**

**1,000 p.s.i. puncture resistant
cover protects the bladder.**

**The bladder is dropped
into the return shaft
through the explosion doors.**

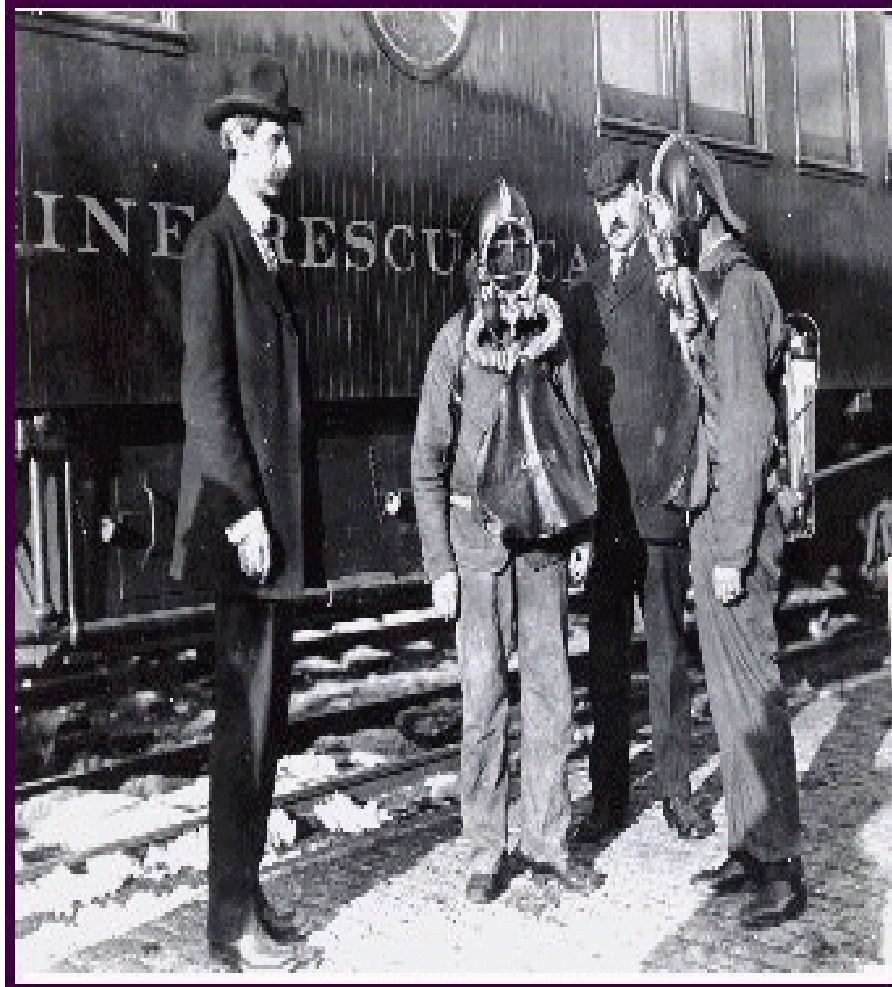


Vent 4 Bladder Inflated





MINE EMERGENCY RESPONSE



- Dr. Joseph A. Holmes inspecting Mine Rescue Personnel in 1911. First National Mine Rescue Competition was held at Forbes Field in Pittsburgh, PA, on October 30, 1911. Our next Nationals in Columbus Ohio in 2011 will be our 100 year anniversary.

WE'VE COME A LONG WAY

2010 MINE RESCUE MEMBER WITH FIRE RESISTANT NOMEX CLOTHING, FIRE RESISTANT GLOVES AND NOMEX FIRE RESISTANT HOOD.

BG 4 DRAGER 4 HOUR, CLOSED CIRCUIT, POSITIVE PRESSURE, BREATHING APPARATUS.



A photograph of firefighters in a dark, smoky environment. Several bright, yellow-orange lights are visible, creating strong lens flares and illuminating the scene. The firefighters are wearing helmets with reflective stripes and are positioned in a way that suggests they are working together in a training exercise. The overall atmosphere is dark and intense, with the smoke being very thick.

**HEAVY SMOKE
TRAINING IN IT'S 16TH YEAR**







Training Facility in Logan, WV for Southern WV Community College



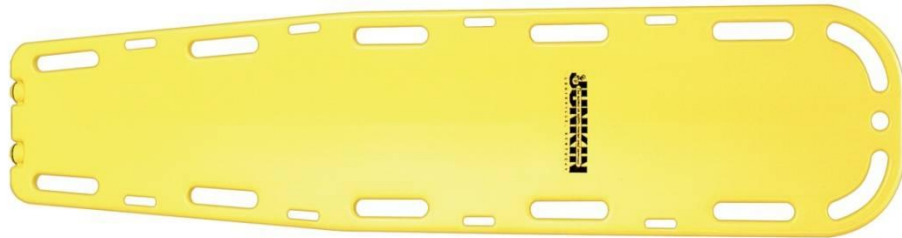






JSA 365 BACKBOARD

Mine Lifeline LLC
1432 South Main Street
P.O. Box 4542
Chapmanville, WV 25508
USA
304 855 7080
jeremy@minelifeline.com



\$149.00

- Plastic Backboard – Rugged one piece lightweight polyethylene spine board with 12 large hand holes for easy handling, built in runners, low profile & X-Ray translucent. Comes with 4 straps Color Bright Yellow
- 72" L X 16" W Weight: 15 lbs. Load Capacity 400 lbs.

JSA 200 Stretcher

Mine Lifeline LLC
1432 South Main Street
P.O. Box 4542
Chapmanville, WV 25508
USA
304 855 7080
jeremy@minelifeline.com



\$615.00

- Yellow high-density polyethylene shell, supported by a stainless steel outer rail, permanently attached with stainless semi-tubular rivets. Features molding runners, fully exposed outer rail, non-absorbent foam pad secured to stretcher & four patient restraint straps. Ideal for unusually rugged rescue situations such as industrial, mining and construction. 84 ½" L x 24" W x 7 ½" H WT. 31 lbs Load Capacity 1200 lbs The JSA 200B detaches in the middle.



Fog Nozzle Pattern, Training











Underground Communication HT-1000 Motorola

Channel 1 – 464.5500

Channel 2 – 461.1250



**Drager Thermal Imaging
Camera - Model UCF 1800**



23 ft. Long X 8 ft Wide X 12 ft. 3 in. Height

Air Conditioner

Awning

2006 Chevrolet – 5500 Series 14 ft. Box
License YTG4835 PA Gross WT 19,500
VIN : 1GBE5C3226F421685

Chevrolet C6500 – 2005 Model
Vin # 1GBJ6C1345F520756
300 HP Duramax Diesel

Satellite Dish
24 ft. Box

Awning

Mine Rescue Command Truck















A Moment To Reflect

